

## Lefferts Donation

Two weeks before he died, on December 25, 2003, Leffert Lefferts donated a unique hunting stock pin to the Museum of Hounds and Hunting. It was his wish that the gold pin, made by Tiffany & Co. to hold a Middleburg Hunt button once worn on the hunt coat of MFH Daniel C. Sands, be forever in the Museum.



Mr. Lefferts was born October 8, 1938 in Summit, NJ, and graduated from St. George's School in Newport, RI. He received a B.A. from Columbia University. Lefferts was a descendent of Leffert Pietersen van Haughwout, who immigrated in 1660 to Kings County, NY. The family's Dutch colonial farmhouse, The Lefferts Homestead, is now a museum in Prospect Park. In 1905 Lefferts Boulevard was named to honor the family's history on Long Island. Mr. Lefferts was a member of the Holland Society. He settled in Upperville, VA, with his wife in 1995.

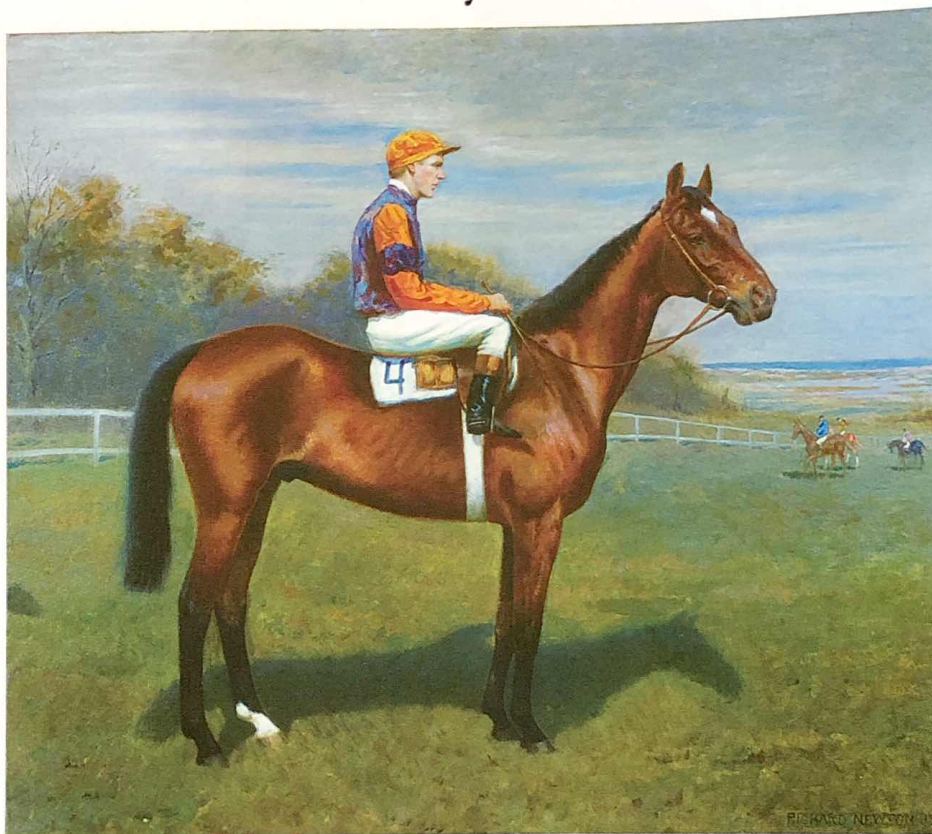
Lef Lefferts held a seat on the New York Stock Exchange and for a brief time managed prizefighters. In the 1970s he trained and rode steeplechase horses. He rode one of his hunting horses to the ribbons in 1980 winning the Field Hunter Champion of America. As MFH of the Bull Run Hunt he worked to save and expand the hunt's territory.

## Daniel Cox Sands, MFH of the Middleburg and Piedmont Hunts (1875-1963)

Mr. Sands served as a Master of Foxhounds for 44 years. His Piedmont Hunt tenure ranged from 1909-1915. Simultaneously from 1912-1915 he was MFH of the Middleburg Hunt. Between 1917 and 1919 Sands was Middleburg's acting MFH and later MFH from 1921-1954.

The only son of Quaker parents, Sands was born on November 22, 1875 in New York City. As a boy he lived in the city and on the family farm in Westchester County, NY. In 1907 he purchased Benton in Middleburg, VA. He died in Middleburg on May 10, 1963, at the age of 88. (continued on page 2)

## Newton By the Sea



*Untitled, Racehorse and Jockey in a Landscape*, Richard Newton, Jr., 1920, MHH Collection

The Museum recently added a "charming painting" of a horse and rider by the Atlantic Ocean to its collection. Dr. and Mrs. Edward Mahoney of Milton, MA, were so intrigued by the Richard Newton, Jr. exhibition at the MHH in 2002 that they decided to donate a 1920 oil.

The Mahoneys' painting is signed and dated but the subject of the double portrait remains a mystery. The jockey in an orange cap and wearing blue & orange silks is posed on a bay horse with a saddle cloth marked number 4. They appear to be the grounds of Newton's own Suffolk Hunt racecourse.

The painting (28" x 34") was purchased from an antique shop in East Hampton,

NY, in the 1980s. Sotheby's Senior Vice-President, Mr. Ben Hall, appraised the canvas for the MHH.

The Museum would welcome any information members might have regarding this painting.



*Detail from Untitled, Racehorse and Jockey in a Landscape*



(continued from page 1)

Funeral services were held at Emmanuel Episcopal Church. Mr. Sands is buried in Sharon Cemetery in Middleburg, VA. His wife was the former Edith Kennedy of Southampton, NY. She was noted for being a grand hostess and was an avid beagler, civic leader and President of the Garden Club of Virginia. Mrs. Sands died in 1948 in a car accident.

At Benton, Mr. Sands bred racehorses and developed a herd of Guernsey prizewinners. The Sands' four stock farms and one dairy employed 35 people in the midst of the Depression. The household required seven servants: Mrs. Sands' maid, Mr. Sands' valet, a parlor maid, a pantry boy, two cooks and a chauffeur.

Mr. Sands' accomplishments are legendary; he was fondly known as "Mr. Middleburg." Sands founded the American Foxhound Club in 1912 and the Middleburg Bank in 1924. He sponsored the first steeplechase of modern times at Mount Defiance in 1911 and developed the Glenwood Park racecourse on his estate in 1932. He served on the Loudoun County Board of Supervisors, was a director of the Loudoun Hospital Center and the President of the Middleburg Community Center.

The 1918 hunt diary of John B. Anderson includes many entries mentioning Sands, such as: *November 23rd--Mount Defiance--MFH Sands hunts hounds. Meet at 10 a.m. a dozen out, found immediately--pulled out at 1 p.m., cut on Prosper.*

*November 27th--Foxcroft--Thanksgiving Meet, 129 in the field: a fox started immediately; runs to Fred's: field behaved well but so much discussion headed the fox: pulled out F's road at 12.*

*Dec 1st--Benton--10 a.m., Piedmont/Middleburg Hounds, Breakfast at Benton: found immediately: ran continuously: pulled out at 2 p.m.*

Mr. Sands wrote a brief history of foxhunting for a special issue of *The Loudoun Times* (June, 1922) where he commented on the sport's American roots noting that General Washington was given several couples of hounds by General Lafayette. The article concludes with, "I have Loudoun County to thank for the greatest days sport and pleasure I have ever known."

Mrs. Neville L. Atkinson in 1978 wrote about instructing Sands in his foxhunting: *"I lived at Welbourne and started to ride to hounds with my*

*Uncle, Dick Dulaney, in 1905. When Mr. Sands decided to try hunting some years later, I felt I was an old hand at the game, and he came out with me on his first hunt. He was absolutely thrilled by it, and was perfectly undaunted by numerous spills, until he learned how to cope with galloping over uneven ground and facing a great variety of obstacles it was necessary to jump in order to stay with hounds. He became one of the best at finding his way across country, with unlimited nerve, a hard man to stay with."*

Mrs. Atkinson painted a rich image of the traditional Thanksgiving meet. She also composed the closing verse: *"When Miss Charlotte Noland's School for girls, Foxcroft, got into full stride, the girls provided the choir for the Episcopal Church in Middleburg. Miss Charlotte invited Mr. Sands to hold the Thanksgiving Day meet on the lawn at Foxcroft and invited the field to return for a hunt breakfast. The 10 a.m. church service was attended by the field in hunt attire. Mr. Sands in his scarlet coat, white breeks and top boots always took-up the collection."*

*He was always with hounds, in spite of their speed: No fence was too high and he gave us a lead."*

## NEW -- Franklin B. Voss, Watercolor



*Untitled, Horses in the Meadow, F. B. Voss*

Mr. and Mrs. Frank Cook have donated a 1951 signed watercolor by the prominent American artist, Franklin B. Voss.

The Cooks, long time horse lovers, just learning about the MHH and its mission, were glad to contribute to the Museum. Mrs. Cook was particularly pleased "to think that this [her picture] would delight future generations." She also donated a Gorham silver pencil made in the form of a hunt whip and two whimsical silver knife rests featuring a hound and hunt whip motif. Mr. and Mrs. Cook are also planning a future bequest.



Silver Pencil

Silver Knife Rests





## Memorial to Foxhunter Janice Lee Reutz

A memorial fund for Jan Reutz (1949-2002) has been established at the Museum by her many friends.

Jan's enthusiasm for hunting led her to move to Loudoun County from Orange County, California, in 1992. She owned and operated J. R. Fieldhunters in Purcellville, VA. Among her favorite horses was Bud, an Irish hunter that she imported after enjoying his fine qualities during one of her trips abroad.

Stories of her love for animals and her kindness as a riding teacher abound among Jan's students and friends. She helped "cure the butterflies" for many first time foxhunters with gentle words of support.

If you would like to make a contribution to the memorial fund, please call Museum Director John Head at 703.771.7021.

## Excerpts from the Reading Room

Women, who ride, as a rule, ride better than men. They, the women, have always been instructed; where as men have usually come to ride without any instruction. They are put upon ponies when they are boys, and put upon their father's horses as they become hobble-dehoy; and thus they obtain the power of sticking on to the animal while he gallops and jumps, -- and even while he kicks and shies; and so progressing, they achieve an amount of horsemanship which answers the purposes of life. But they do not acquire the art of riding with exactness, as women do, and rarely have such hands as a woman on a horse's mouth. The consequence of this is that women fall less often than men, and the field is not often thrown into horror which would arise were a lady known to be in a ditch with a horse lying on her.

*Hunting Sketches*, 1865, Anthony Trollope

### Historic Hunt Button Search

Do you have *old* hunt buttons tucked away at home? The Museum is searching for historic buttons from North American hunt clubs that are no longer in existence. Please contact the director if you have contributions.



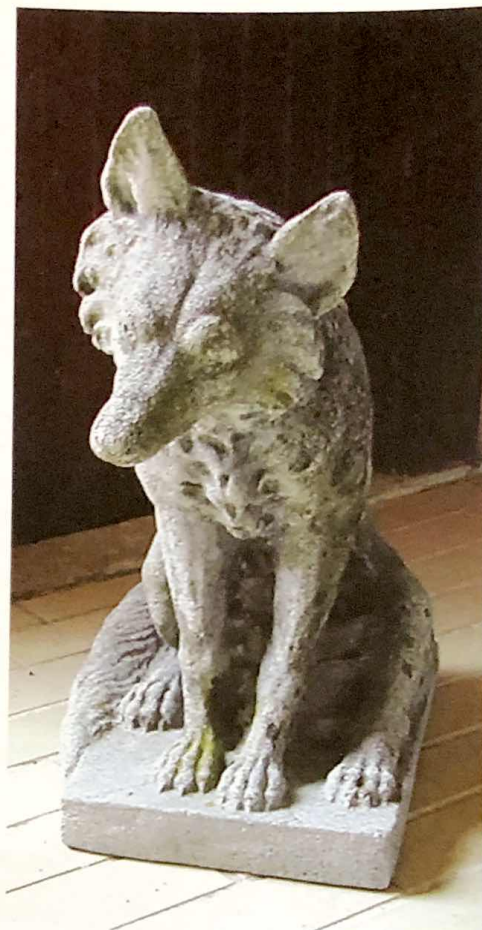
## Boston Sculptor: Amelia Peabody

Two fox garden sculptures, created in 1950 by Amelia Peabody (1890-1984), have recently been donated to the MHH by Janet Carter Churchill, MFH of the Groton Hunt from 1955-1964.

Mrs. Churchill's generosity to the Museum's collection in the past includes in part a rare series of *Foxhunting in America* aquatints c.1930 by Edward King, Groton Hunt button-making dies, silver trophies and a decorative room screen. Several of Mrs. Churchill's hunt coats, in hunt colors that pay tribute to America's Continental Army, are in the MHH collection. The patriotic dark blue coats with brass buttons and buff collars are the same as those proudly worn by members of the Genesee Valley Hunt, NY, established in 1876. No "red coats" were permitted in these patriotic hunts.

The Groton Hunt, Groton, MA, flourished from 1922-1964. After it disbanded, Amelia Peabody was commissioned to create a hunt memorial. Today, in the tall pines along the banks of the Nashoba River, her fox and hound sculptures still proudly top the ends of a large decorative stone bench that she designed and inscribed with Groton Hunt history. Miss Amelia Peabody's sculpture and ceramics can be found in the collections of the Boston Museum, the Massachusetts Historical Society and numerous Boston hospitals and libraries. In 1930 she had a large exhibit at The Guild of Boston Artists on Newbury Street.

The artist was an avid foxhunter and long time member of the Norfolk Hunt, Dover, MA. Her Mill Hill and Powisset Farms provided nearly 1,000 acres of covert. The only child of Frank Everett Peabody, founder of Kidder, Peabody & Co., she grew up in Boston society on Commonwealth Avenue. Miss Peabody was a noted philanthropist and left much of her open land to the Trustees of Reservations, now Noanet Woods. She supported the founding of the Tufts Veterinary School and MIT's Eaton-Peabody Laboratory. After her death at age 94, in 1984, The Amelia Peabody



*Seated Fox*, Amelia Peabody, 1950, cast concrete, shown: one of two given to the Museum of an edition of four, 14"x19"x 27 1/2", donated by Janet Churchill, ex-MFH.

Charitable Fund of Boston continues her philanthropy.

A tribute to Amelia Peabody can be found in *The Norfolk Hunt: One Hundred Years of Sport*, now in the MHH Reading Room thanks to the club's recent donation. The book notes that in 1939, riding her hunter Single Check, she won both the H. Hathaway Plate, presented to the best hunter in the Norfolk hunt field and the Heard Cup, for champion hunter, at the New England Hunter Trials. Miss Peabody also won the Appleton Cup, for the high scoring pairs hunt team, that same year at the "Trials."

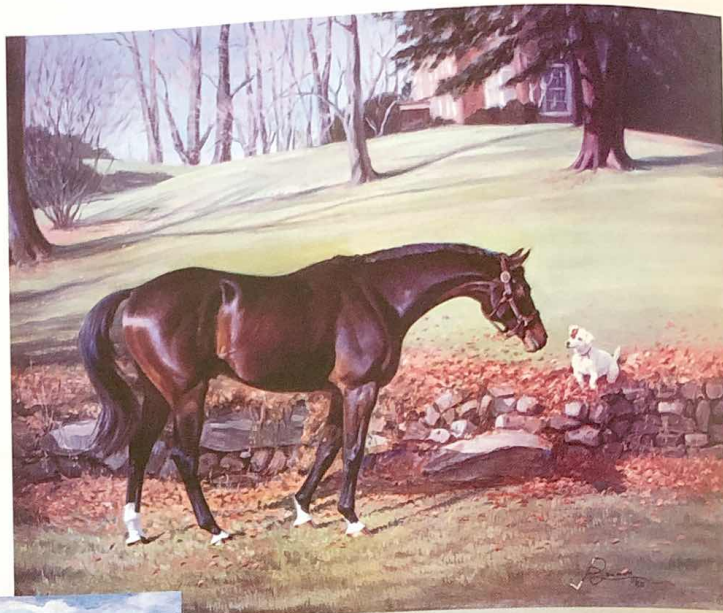


# Museum Products

Our exclusive Museum note cards, MHH logo pins, posters and prints, exhibition brochures, MHH decals and caps can be ordered by calling 703.777.2414. Proceeds from the sale of these museum products will benefit the Acquisition Fund and maintenance of the Museum.

## JEAN BOWMAN PRINTS AVAILABLE

The Museum is pleased to be able to offer for sale several limited edition prints produced by Russell V. D. Janzen from the work of noted American sporting artist Jean Bowman. Two of the prints were originally signed and numbered by the artist. Until recently, the four prints have been safely in storage. We wish to thank Mr. Janzen's granddaughter, Melissa Chavez, for bringing these unique prints to our attention.



*Horse and Terrier*, 1980, print  
\$125.00 MHH-JB-504



*The Scurry, The Orange County Hunt*, 1988, print, limited edition, signed by the artist, \$385.00 MHH-JB-501

*Under Starters Orders at the Virginia Gold Cup*,  
67th Running, May 2, 1992, print  
\$45.00 MHH-JB-503



*Mares at Closeburn Stud*,  
no date, print, limited  
edition, signed by the artist,  
\$185.00 MHH-JB-502



# Paul Brown

Artist and Illustrator



AMERICAN SPORTING ARTIST SERIES  
May 26 - September 3, 2001

MUSEUM OF HOUNDS AND HUNTING  
MORVEN PARK, LEBURG, VIRGINIA • 703-777-2414 • www.morvenpark.org



Paul Brown 2001,  
\$20.00 MHH-P-2001

Paul Brown 2001  
Exhibition Brochure,  
\$8.00 MHH-BB-2001

# RICHARD NEWTON JR

AMERICAN SPORTING ARTIST SERIES



MAY 25 - SEPTEMBER 15, 2002

MUSEUM OF HOUNDS & HUNTING  
MORVEN PARK  
LEBURG, VIRGINIA  
INFORMATION: 703-777-2414

Richard Newton 2002,  
\$25.00 MHH-P-2002

Richard Newton 2002  
Exhibition Brochure,  
\$8.00 MHH-NB-2002



Piedmont Charlie, by Anita Baarns,  
boxed set of 10 blank cards with  
envelopes. \$12.95 MHH-AB-204



Old Faithful, by Anita Baarns, boxed set  
of 10 blank cards with envelopes. \$12.95  
MHH-AB-202



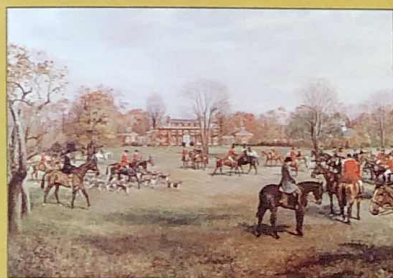
Red Rascal, by Anita Baarns, boxed  
set of 10 blank cards with envelopes.  
\$12.95 MHH-AB-203



Young Entry Birth Announcement,  
by Jean Bowman, boxed set of 10  
cards with envelopes. \$12.95  
MHH-JB-205

# FRANKLIN B. VOSS

AMERICAN SPORTING ARTIST SERIES

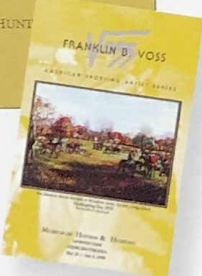


MAY 29 - JULY 6, 1999

MUSEUM OF HOUNDS & HUNTING  
MORVEN PARK,  
LEBURG, VIRGINIA  
INFORMATION: 703-777-2414

Franklin Voss 1999,  
\$20.00 MHH-P-1999

Franklin Voss 1999  
Exhibition Brochure, \$8.00  
MHH-VB-1999



# THE HUNTSMAN'S ALPHABET



For the New Year  
2003

<b>A</b> is for Airedale The Airedale is a breed of terrier from England It was first bred in Airedale, Yorkshire	<b>B</b> is for Bitch A bitch is a female dog It is the opposite of a dog	<b>C</b> is for Cocker The Cocker is a breed of spaniel from England It was first bred in Cockermouth, Cumbria	<b>D</b> is for Dog A dog is a member of the family Canis domestica	<b>E</b> is for English The English is a breed of spaniel from England It was first bred in England	<b>F</b> is for Fox A fox is a member of the family Canis vulpinus	<b>G</b> is for Gait A gait is a way of moving	<b>H</b> is for Hunt A hunt is a search for game	<b>I</b> is for Irish The Irish is a breed of terrier from Ireland It was first bred in Ireland	<b>J</b> is for Jack A Jack is a breed of terrier from England It was first bred in Jackman, Yorkshire	<b>K</b> is for Kennel A kennel is a place where dogs are kept	<b>L</b> is for Lead A lead is a chain or collar used to control a dog	<b>M</b> is for Master A master is a person who owns a dog	<b>N</b> is for Noddy A noddy is a breed of dog from Ireland It was first bred in Noddy, Ireland	<b>O</b> is for Obedience Obedience is a quality of a dog which makes it easy to control	<b>P</b> is for Pack A pack is a group of dogs of the same breed	<b>Q</b> is for Quarter A quarter is a breed of horse from England It was first bred in Quarter, England	<b>R</b> is for Run A run is a way of moving	<b>S</b> is for Scent A scent is a smell which a dog can follow	<b>T</b> is for Tail A tail is a part of a dog's body	<b>U</b> is for Udder An udder is a part of a cow's body	<b>V</b> is for Vagabond A vagabond is a person who has no home	<b>W</b> is for Whelp A whelp is a young dog	<b>X</b> is for X-ray An X-ray is a picture of the inside of a body	<b>Y</b> is for Yacht A yacht is a small boat	<b>Z</b> is for Zebra A zebra is a member of the family Equus
---	--	--	--	---	---	--	--	---	--	--	---	--	--	--	---	--	--	---	---	--	---	--	---	---	---

Huntsman's Alphabet 2002, \$25.00  
MHH-P-THA



Orange County Foxhounds, by Gary Stinton,  
boxed set of 10 blank cards with envelopes.  
\$16.95 MHH-GS-208





*Mouse*, by Sandra M. Forbush,  
boxed set of 10 blank cards  
with envelopes. \$16.95  
MHH-SMF-207

*Peeler*, by Sandra M. Forbush,  
boxed set of 10 blank cards  
with envelopes. \$16.95  
MHH-SMF-206



*Tom Seabright and Jasper*,  
by Ben Marshall,  
boxed set of 10 blank cards with  
envelopes. \$16.95 MHH-BM-201

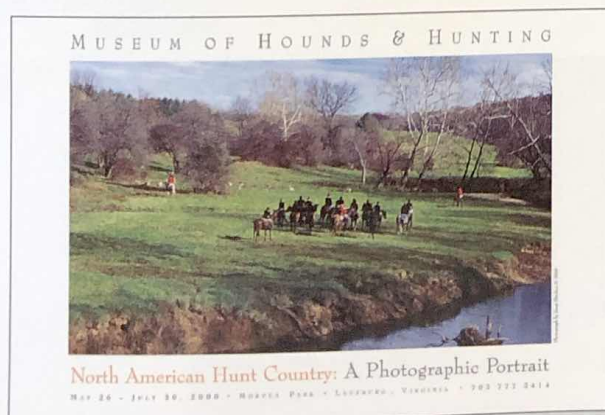


Baseball Cap, assorted colors  
\$20.00 for members, \$23.00 for  
non-members. MHH-BC

**Other Museum Products not shown:**  
Museum Button \$13.00 for members only  
Museum Car Decal \$4.00 for members,  
\$5.00 for non-members.

**Posters:**  
*Hound Show 1998*, \$20.00 MHH-P-1998  
Just a few available

The Museum's color posters make great  
gifts. Call 703.777.2414 for orders.  
*Virginia residents add 4.5% sales tax.*



*Janet Hitchen 2000*, \$20.00 MHH-P-2000

## MHH Collection Grows: Recent Acquisitions 2003-2004

*Untitled, Steeplechase*, Jean Bowman, watercolor, 1937, donated  
by Melissa Chavez, Los Alamos, NM.

Jean Bowman Prints: *The Scurry*, *The Orange County Hunt*, 1988,  
limited edition, signed by the artist, *Under Starters Orders at the Virginia  
Gold Cup*, 67th Running, May 2, 1992, *Horse and Terrier*, 1980, *Mares  
at Closeburn Stud*, limited edition, signed by the artist, donated by  
Melissa Chavez, Los Alamos, NM.

Hunting Flask and Hunting Horn, donated by Frederic C. Thomas,  
Berkley, CA.

*Untitled*, Foxhunting Series, Paul Brown, aquatints, c. 1937, Derrydale  
Press set of four titles: *Hoick! Hoick! Hoick!*, *Pressing Him*, *Music Ahead*, and  
*Kenel Bound*. Donated by Mr. and Mrs. Harry Huberth, Pinchurst, NC.

Virginia Folk Art Weathervane, cut metal, early 20th century, donated by  
Mr. and Mrs. Harry Huberth, Pinchurst, NC.

*The Huntsman and Hounds*, aquatint, engraved by T. O. Barlow after  
Richard Ansdale, donated by Mr. Elias L. Guy, Williamsburg, VA.

*A Kill in the Open*, aquatint, engraved by L. Wolff & Co., after G. D.  
Rowlandson, donated by Mr. Elias L. Guy, Williamsburg, VA.

*Untitled Photographs of Huntsman*, H. D. "Dick" Bywaters, donated by  
Harcourt and Douglas Lees, Warrenton, VA.

*Seated Fox*, Amelia Peabody, 1950, cast concrete, two from an edition of  
four, 14"x19"x 27 1/2", donated by Mrs. Janet Churchill, ex-MFH, New  
Castle, DE.

*Untitled, Racehorse and Jockey in a Landscape*, Richard Newton, Jr., oil on  
canvas, 1920, donated by Dr. and Mrs. Edward Mahoney, Milton, MA.

Groton Hunt Flatware, a set of engraved silver, donated by Mrs. Janet  
Churchill, ex-MFH, New Castle, DE.

New England Hound Show Trophy, silver bowl, donated by Mrs. Janet  
Churchill, ex-MFH, New Castle, DE.

Deep Run Hunt Buttons and *It's a Great Day: True Story of the Gunston  
Hall Fox*, a book by Louise Turner, donated by Stuart E. Brown, Jr.,  
Berryville, VA.

*Orange County Hounds*, pastel study, a gift of the artist, Gary Stinton,  
Hereford, UK.

Middleburg Hunt Stock Pin, brass and gold, made by Tiffany & Co.,  
donated by the late Leffert Lefferts, The Plains, VA.

*History of the Norfolk Hunt*, donated by the Norfolk Hunt, Dover MA.

Caroline Hunt Button, brass, donated by Lt. Col. And Mrs. Robert  
N. Ferrer, Jr., Milford, VA.

*History of the Deep Run Hunt*, donated in memory of her father, by  
Mrs. Marsh Davis, Manakin-Sabot, VA.

*The Essex Foxhounds* and *Mrs. Jill Slater Fanning*, ex-MFH, watercolor,  
Michael L. Lyne, 1950, and a Sporting Library Collection, Bequest of  
the late Mrs. Fanning, Unionville, PA.



## Members Reception

The Museum Members Reception, celebrating our 19th year, will be held in the Coach House and Vaughan Room on Saturday, May 29th, from 6:00 to 7:30 p.m. Memorial Day Weekend has become a traditional gathering of sporting enthusiasts at Morven Park. Hundreds of hounds, hunt staff, masters and members from North America congregate for Museum festivities and the annual Virginia Foxhound Club Show.

## Sponsorship Opportunities in 2004

The Museum of Hounds and Hunting is interested in establishing sponsorships with businesses nationwide in 2004. Please call the Director at 703.771.7021 to discuss current goals. Sponsorship areas include the development of the collection—conservation and acquisition, the Members Reception, new publications, web programs, and educational displays related to the care of hounds and hunt horses. We are pleased to announce that Good Printers, Inc., of Bridgewater, VA, has graciously printed this issue of *Museum News*.

## Authors Needed

*Museum News* welcomes manuscripts and illustrations for publication. Historical material should pertain to hunting with hounds in North America. Guest curators and concepts for annual displays are also needed. Here's your chance to share your material with fellow foxhunting enthusiasts. Call today!

## Tax Saving Tips— A 2004 Reminder

Please remember that your donations to the Collection, Membership fees and financial gifts to the Museum are fully deductible from taxable income in accordance with the provisions of Federal income tax law. The Westmoreland Davis Memorial Foundation is a private operating foundation as defined in Section 501(c)(3) of the Internal Revenue Service Code, as amended, and to which donations are tax deductible under section 170 of the code.

In estate planning the Museum's tax-exempt status should be brought to the attention of your attorney. With your help, the MHH will continue to preserve the rich North American heritage of hunting with hounds for future generations.

## THE MUSEUM OF HOUNDS AND HUNTING

Morven Park  
P.O. Box 6228  
Leesburg, Virginia 20178  
703.777.2414  
www.morvenpark.org



The Museum is open:  
April -November, 2004  
Friday-Monday  
Tours on the hour beginning at Noon  
Last tour begins at 4:00 pm  
Special holiday hours in December  
Other times by appointment

THE PURPOSE OF THE MUSEUM is to preserve the rich North American heritage of hunting with hounds, today and for the future; acquire important artifacts before they are lost; provide a repository for valuable artifacts; and, by developing educational exhibits, promote public understanding of hunting with hounds.

*MUSEUM NEWS* is published by  
The Museum  
of Hounds and Hunting

John Head, *Editor*

J. Harris Anderson, *Copy Editor*

©2004 Museum of Hounds and Hunting  
All rights reserved. Reproduction in whole or in part without written permission is prohibited.

email: jhead@morvenpark.org

Printing courtesy of  
Good Printers, Inc.  
213 Dry River Road  
Bridgewater, VA 22812  
800-296-3731

## MUSEUM ADVISORY COMMITTEE

Ms. Marion Maggiolo, *Co-Chair*  
Ms. Pamela Ohrstrom, *Co-Chair*  
Ms. Martha Ellis Kelley, *Treasurer*  
Mrs. Christopher (Mary) Reed, *Secretary*  
Ms. Nancy Bedford  
Dr. Rita Mae Brown  
Mr. John J. Carle, II  
Mr. Peyton S. Cochran  
Mrs. William G. (Joyce) Fendley  
Mr. Robert N. Ferrer, Jr.  
Mr. Sherman P. Haight, Jr.  
Mrs. Sherman P. Haight, Jr.  
Dr. Joseph M. Rogers  
Mrs. Joseph M. Rogers  
Mrs. Donald Van Schaak  
Mr. Peter Wynants  
Mr. James L. Young  
Mr. Will O'Keefe, *Executive Director,*  
*Morven Park*

Mr. John Head, *Director of the Museum*

## THE MUSEUM OF HOUNDS AND HUNTING

Morven Park • P.O. Box 6228 • Leesburg, Virginia 20178 • 703.777.2414

### MEMBERSHIP FORM

Name	_____		
Address	_____ Town _____		
State	Zip	Phone	Hunt Affiliation
Membership:			
Individual	\$50	Patron	\$250
Family	\$90	Life Member	\$750
Hunt Club	\$100	Contributions	\$
Sponsor	\$150		
Please make checks payable to: The Westmoreland Davis Memorial Foundation, Inc.			
MasterCard	Card Number _____		
Visa	Exp. Date	Signature _____	

Please consider donating or loaning important artifacts to the Museum. We appreciate your support!



## Restoration of Mansion Continues

The exterior restoration of the Mansion at Morven Park is continuing during 2004 with the second part of Phase I. The work is being done by Tidewater Preservation of Fredericksburg, VA. Already this spring, the windows and doors have been removed and taken to the workshop to be repaired before being returned. The scaffolding is going up in order for stucco removal and building repairs to begin in June. The roof work and stucco replacement is anticipated to begin in late summer. The objects inside the mansion have been stored or protected in order for this restoration to take place without damaging the objects.



*Photo courtesy of Morven Park*

The property is still open for tours with our wonderful guides who have "stepped up to the plate" to give tours that incorporate not only the wonderful history of the property and collections but also the restoration. We invite all to visit during this exciting time. Hours are Friday-Monday, 12-4PM with tours on the hour.

For more information call 703.777.2414 or visit the Morven Park website at [www.morvenpark.org](http://www.morvenpark.org).

*Morven Park is operated in the public interest by the Westmoreland Davis Memorial Foundation, Inc., a 501(c)(3) organization founded to protect and promote the historic and cultural resources of Morven Park.*

### MUSEUM OF HOUNDS AND HUNTING

The Westmoreland Davis  
Memorial Foundation, Inc.  
Morven Park  
P.O. Box 6228  
Leesburg, Virginia 20178

*Address Correction Requested*

## Tom Ashbridge Retires

The Co-Chair of the MHH Advisory Committee, Thomas Ashbridge, III, retired in March 2004 after nearly 20 years of dedicated service. Tom was also a member of the Westmoreland Davis Memorial Foundation Board of Trustees at Morven Park.

Mr. Ashbridge was the MFH of the Huntingdon Valley Hunt, Furlong, PA, from 1959-1976. In the early 1980s Tom and his late wife, Sally, built a home in Boyce, VA, after his retirement from Kidder, Peabody & Co. He had worked in the Philadelphia office for

35 years, after graduating from the University of Pennsylvania. At his retirement he was the co-Middle Atlantic manager.

Tom and Sally loved horses, hounds and steeplechasing. In 1987, the Ashbridge's Wolf Creek was the Virginia Steeplechase Association's leading timber horse.

Dr. Joseph Rogers, Cliff Hunt and fellow foxhunters describe Tom, a Life Member of the Museum, as a quiet, thoughtful, gentle man. Characteristic of the old saying that still waters run deep was the little known fact that Tom was the navigator of a B-29 that led the squadron sorties in the Pacific in WW II.

## 19th C. Artisan Exhibits— Donors Needed for a Matching Grant

Two multi-media exhibits featuring life-size workshops of a harness maker and a farrier opened at the Museum on April 19, 2002. These three-dimensional displays stand over 40 feet in length and feature educational audio narratives. At the dawn of the 21st century the workshops play an important role in collecting late 19th century history for visitors of all ages. Museum Advisory Committee member Margaret van Schaack supervised every significant detail of this historical gift, which was donated by JWK Properties, Inc. on behalf of John W. Kluge.

Relocation costs to the MHH exceeded \$50,000. This was the largest capital expense ever incurred by the MHH. The Museum is seeking gifts of \$250 or more to meet a challenge grant for \$25,000 from a generous anonymous donor. To date we are halfway to reaching our goal. Your support is needed! Please consider making a tax deductible donation to help the Museum. Checks can be sent directly to the Museum of Hounds and Hunting. If you prefer to use a credit card, please call 703.777.2414. A donor recognition plaque is prominently displayed near the exhibits in the Coach House Gallery.